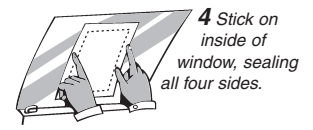
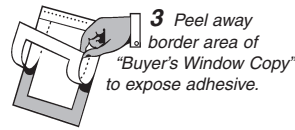
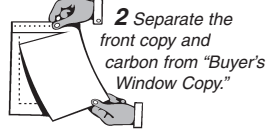
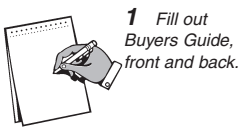


INSTRUCTIONS TO DEALER



BUYERS GUIDE

IMPORTANT: Spoken promises are difficult to enforce. Ask the dealer to put all promises in writing. Keep this form.

VEHICLE MAKE _____ MODEL _____ YEAR _____ VEHICLE IDENTIFICATION NUMBER (VIN) _____

WARRANTIES FOR THIS VEHICLE:

IMPLIED WARRANTIES ONLY

The dealer doesn't make any promises to fix things that need repair when you buy the vehicle or afterward. But *implied warranties* under your state's laws may give you some rights to have the dealer take care of serious problems that were not apparent when you bought the vehicle.

DEALER WARRANTY

FULL WARRANTY.

LIMITED WARRANTY. The dealer will pay _____ % of the labor and _____ % of the parts for the covered systems that fail during the warranty period. Ask the dealer for a copy of the warranty, and for any documents that explain warranty coverage, exclusions, and the dealer's repair obligations. *Implied warranties* under your state's laws may give you additional rights.

SYSTEMS COVERED:

DURATION:

NON-DEALER WARRANTIES FOR THIS VEHICLE:

MANUFACTURER'S WARRANTY STILL APPLIES. The manufacturer's original warranty has not expired on some components of the vehicle.

MANUFACTURER'S USED VEHICLE WARRANTY APPLIES.

OTHER USED VEHICLE WARRANTY APPLIES.

Ask the dealer for a copy of the warranty document and an explanation of warranty coverage, exclusions, and repair obligations.

SERVICE CONTRACT. A service contract on this vehicle is available for an extra charge. Ask for details about coverage, deductible, price, and exclusions. If you buy a service contract within 90 days of your purchase of this vehicle, *implied warranties* under your state's laws may give you additional rights.

ASK THE DEALER IF YOUR MECHANIC CAN INSPECT THE VEHICLE ON OR OFF THE LOT.

OBTAIN A VEHICLE HISTORY REPORT AND CHECK FOR OPEN SAFETY RECALLS. For information on how to obtain a vehicle history report, visit ftc.gov/usedcars. To check for open safety recalls, visit safecar.gov. You will need the vehicle identification number (VIN) shown above to make the best use of the resources on these sites.

SEE OTHER SIDE for important additional information, including a list of major defects that may occur in used motor vehicles.

Si el concesionario gestiona la venta en español, pídale una copia de la Guía del Comprador en español.

BUYERS GUIDE

IMPORTANT: Spoken promises are difficult to enforce. Ask the dealer to put all promises in writing. Keep this form.

VEHICLE MAKE

MODEL

YEAR

VEHICLE IDENTIFICATION NUMBER (VIN)

WARRANTIES FOR THIS VEHICLE:

IMPLIED WARRANTIES ONLY

The dealer doesn't make any promises to fix things that need repair when you buy the vehicle or afterward. But *implied warranties* under your state's laws may give you some rights to have the dealer take care of serious problems that were not apparent when you bought the vehicle.

DEALER WARRANTY

FULL WARRANTY.

LIMITED WARRANTY. The dealer will pay ____ % of the labor and ____ % of the parts for the covered systems that fail during the warranty period. Ask the dealer for a copy of the warranty and for any documents that explain warranty coverage, exclusions, and the dealer's repair obligations. *Implied warranties* under your state's laws may give you additional rights.

SYSTEMS COVERED:

DURATION:

NON-DEALER WARRANTIES FOR THIS VEHICLE:

- MANUFACTURER'S WARRANTY STILL APPLIES. The manufacturer's original warranty has not expired on some components of the vehicle.
- MANUFACTURER'S USED VEHICLE WARRANTY APPLIES.
- OTHER USED VEHICLE WARRANTY APPLIES.

Ask the dealer for a copy of the warranty document and an explanation of warranty coverage, exclusions, and repair obligations.

- SERVICE CONTRACT. A service contract on this vehicle is available for an extra charge. Ask for details about coverage, deductible, price, and exclusions. If you buy a service contract within 90 days of your purchase of this vehicle, *implied warranties* under your state's laws may give you additional rights.

ASK THE DEALER IF YOUR MECHANIC CAN INSPECT THE VEHICLE ON OR OFF THE LOT.

OBTAIN A VEHICLE HISTORY REPORT AND CHECK FOR OPEN SAFETY RECALLS. For information on how to obtain a vehicle history report, visit ftc.gov/usedcars. To check for open safety recalls, visit safecar.gov. You will need the vehicle identification number (VIN) shown above to make the best use of the resources on these sites.

SEE OTHER SIDE for important additional information, including a list of major defects that may occur in used motor vehicles.

Si el concesionario gestiona la venta en español, pídale una copia de la Guía del Comprador en español.



Here is a list of some major defects that may occur in used vehicles.

Frame & Body

Frame-cracks, corrective welds, or rusted through
Dog tracks-bent or twisted frame

Engine

Oil leakage, excluding normal seepage
Cracked block or head
Belts missing or inoperable
Knocks or misses related to camshaft lifters and push rods
Abnormal exhaust discharge

Transmission & Drive Shaft

Improper fluid level or leakage, excluding normal seepage
Cracked or damaged case which is visible
Abnormal noise or vibration caused by faulty transmission or drive shaft
Improper shifting or functioning in any gear
Manual clutch slips or chatters

Differential

Improper fluid level or leakage, excluding normal seepage
Cracked or damaged housing which is visible
Abnormal noise or vibration caused by faulty differential

Cooling System

Leakage including radiator
Improperly functioning water pump

Electrical System

Battery leakage
Improperly functioning alternator, generator, battery, or starter

Fuel System

Visible leakage

Inoperable Accessories

Gauges or warning devices
Air conditioner
Heater & Defroster

Brake System

Failure warning light broken
Pedal not firm under pressure (DOT spec.)
Not enough pedal reserve (DOT spec.)
Does not stop vehicle in straight line (DOT spec.)
Hoses damaged
Drum or rotor too thin (Mfr. Specs)
Lining or pad thickness less than 1/32 inch
Power unit not operating or leaking
Structural or mechanical parts damaged

Air Bags

Steering System

Too much free play at steering wheel (DOT specs.)
Free play in linkage more than 1/4 inch
Steering gear binds or jams
Front wheels aligned improperly (DOT specs.)
Power unit belts cracked or slipping
Power unit fluid level improper

Suspension System

Ball joint seals damaged
Structural parts bent or damaged
Stabilizer bar disconnected
Spring broken
Shock absorber mounting loose
Rubber bushings damaged or missing
Radius rod damaged or missing
Shock absorber leaking or functioning improperly

Tires

Tread depth less than 2/32 inch
Sizes mismatched
Visible damage

Wheels

Visible cracks, damage or repairs
Mounting bolts loose or missing

Exhaust System

Leakage
Catalytic Converter

DEALER NAME

ADDRESS

TELEPHONE

EMAIL

FOR COMPLAINTS AFTER SALE, CONTACT:

I HEREBY ACKNOWLEDGE RECEIPT OF THE BUYERS GUIDE AT THE CLOSING OF THIS SALE.

BUYER'S SIGNATURE:

IMPORTANT: The information on this form is part of any contract to buy this vehicle. Removing this label before consumer purchase (except for purpose of test-driving) violates federal law (16 C.F.R. 455).

Here is a list of some major defects that may occur in used vehicles.

Frame & Body

Frame-cracks, corrective welds, or rusted through
Dog tracks-bent or twisted frame

Engine

Oil leakage, excluding normal seepage
Cracked block or head
Belts missing or inoperable
Knocks or misses related to camshaft lifters and push rods
Abnormal exhaust discharge

Transmission & Drive Shaft

Improper fluid level or leakage, excluding normal seepage
Cracked or damaged case which is visible
Abnormal noise or vibration caused by faulty transmission or drive shaft
Improper shifting or functioning in any gear
Manual clutch slips or chatters

Differential

Improper fluid level or leakage, excluding normal seepage
Cracked or damaged housing which is visible
Abnormal noise or vibration caused by faulty differential

Cooling System

Leakage including radiator
Improperly functioning water pump

Electrical System

Battery leakage
Improperly functioning alternator, generator, battery, or starter

Fuel System

Visible leakage

Inoperable Accessories

Gauges or warning devices
Air conditioner
Heater & Defroster

Brake System

Failure warning light broken
Pedal not firm under pressure (DOT spec.)
Not enough pedal reserve (DOT spec.)
Does not stop vehicle in straight line (DOT spec.)
Hoses damaged
Drum or rotor too thin (Mfgr. Specs)
Lining or pad thickness less than 1/32 inch
Power unit not operating or leaking
Structural or mechanical parts damaged

Air Bags

Steering System

Too much free play at steering wheel (DOT specs.)
Free play in linkage more than 1/4 inch
Steering gear binds or jams
Front wheels aligned improperly (DOT specs.)
Power unit belts cracked or slipping
Power unit fluid level improper

Suspension System

Ball joint seals damaged
Structural parts bent or damaged
Stabilizer bar disconnected
Spring broken
Shock absorber mounting loose
Rubber bushings damaged or missing
Radius rod damaged or missing
Shock absorber leaking or functioning improperly

Tires

Tread depth less than 2/32 inch
Sizes mismatched
Visible damage

Wheels

Visible cracks, damage or repairs
Mounting bolts loose or missing

Exhaust System

Leakage
Catalytic Converter

DEALER NAME

HELVETICA 13PT.

ADDRESS

Address

TELEPHONE

EMAIL

Phone No.

FOR COMPLAINTS AFTER SALE, CONTACT:

Name

I HEREBY ACKNOWLEDGE RECEIPT OF THE BUYERS GUIDE AT THE CLOSING OF THIS SALE.

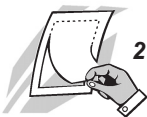
BUYER'S SIGNATURE:

IMPORTANT: The information on this form is part of any contract to buy this vehicle. Removing this label before consumer purchase (except for purpose of test-driving) violates federal law (16 C.F.R. 455).



TO REMOVE LABEL FROM WINDOW

1 Use a sharp pencil to separate middle Buyers Guide label from border along bottom perforation.



2 Pull the middle Buyers Guide away from the window, leaving the border.



3 Remove border and clean away adhesive area with soapy water or window cleaner.